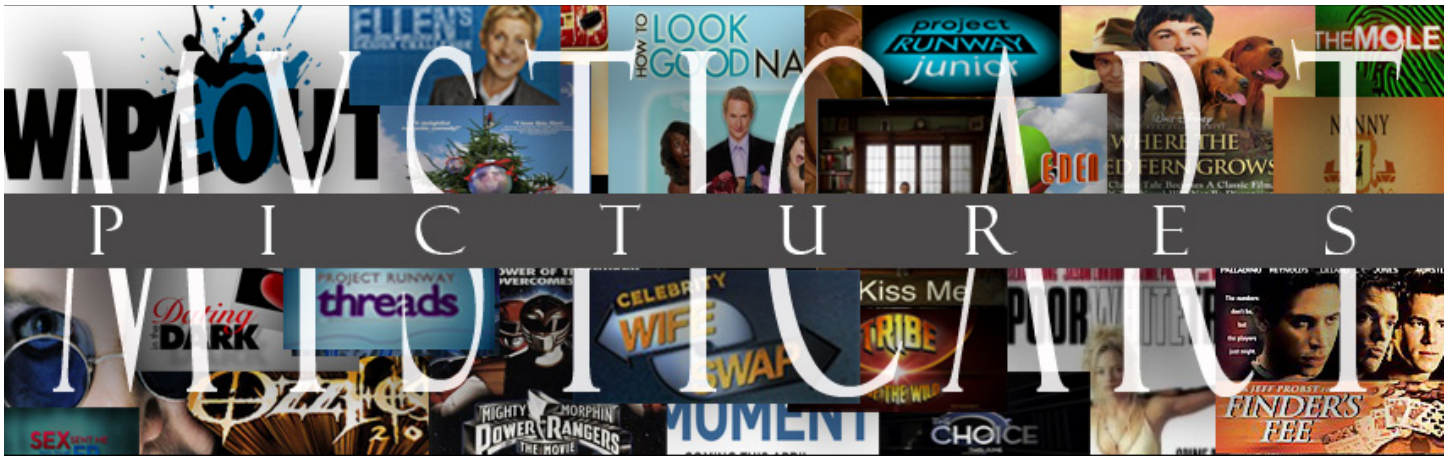


IMAGINE | COLLABORATE | CREATE



MysticArt Pictures is uniquely positioned in the Entertainment Industry as one of the most innovative multi-faceted companies of its kind. The foundation of this award-winning company and the key to its success in both television and film is the ability to package stellar talent. From casting over 5000 hours of both scripted and unscripted television shows for every major broadcast and cable network to producing television projects and critically acclaimed films, MysticArt has consistently created opportunities for creative minds to bring simple concepts and innovative ideas to life. President and CEO Katy Wallin has a proven track record and a fierce commitment to creating and packaging talent-driven content in every genre of entertainment.

The company's mission is to Imagine, Collaborate, & Create...

IMAGINE: The MysticArt Pictures team has a flair for innovation and finds the inspiration to push the boundaries of what's possible in each new project. Our passion, perseverance, and positive approach has proven teamwork really does make the dream work time and again.

COLLABORATE: Collaboration is a key component and one of the most valued missions our company maintains. We have been fortunate to have worked with every broadcast and cable network, hundreds of television and film production companies, some of the most recognized talent in the world, and built relationships with some of the most creative and passionate minds in the industry. With each new project, MysticArt looks forward to building and sustaining relationships with professionals who share the same vision.

CREATE: The company prides itself on its consistently inspirational, aspirational, and influential content and thrives on the ability to carry a project from concept to deliverables, completing over 100 hours of television every year.

With a full production/casting facility, cutting edge technology, and a team of highly creative and passionate professionals, MysticArt has completed series, pilots and presentations for every major broadcast and cable network and has specialized teams dedicated to cater to a wide variety of formats such as game shows, docu-series, dating, transformational, renovation, social experiments, competition series, celebrity-driven formats, family entertainment, children's entertainment, and scripted comedy, drama, and films.

- 25 years of experience creating, developing, packaging, and casting talent-driven content
- Relationships with talent around the world including actors, comedians, experts, hosts & celebrities
- A growing global database of well over half a million people online
- Satellite offices across the globe
- Talent tracking system that follows and tracks talent and new show ideas
- State of the art technology for producers to view casting selects & make choices for projects anywhere in the world
- Full in-house production services and a dedicated and highly efficient staff
- Create produce and cast television content in scripted and unscripted formats
- Vast experience in raising equity financing, packaging, and producing feature films
- Ability to cast and produce for any size project, sizzle, pilot, or series

WWW.MYSTICARTPICTURES.COM | 323-536-9999

BIOGRAPHY

MYSTICART PICTURES

Katy's mission has always been to IMAGINE, COLLABORATE & CREATE...

Katy Wallin launched the award-winning, multifaceted casting and production company MysticArt Pictures. Under the leadership of CEO and President Katy Wallin, MysticArt Pictures has grown from a boutique casting office to a full-service casting and production company. Over the past 25 years, MysticArt has completed well over 5000 hours of scripted and unscripted television including series, pilots and presentations for every major broadcast and cable network, and has received critical acclaim for many of the films produced under Wallin's production banner.

Having discovered and cultivated talent that won over home audiences on some of the most instrumental programs to influence television, Katy has further expanded her company by launching MysticArt Television and creates, develops, and packages new television content, which all include one key component – talent. A skilled producer, Katy utilizes her years of experience working with and discovering talent to elevate simple concepts to groundbreaking new series.

Wallin approaches each new business challenge with her intrinsic flair for innovation and creative problem solving. Wallin is a firm believer that "anything is possible." She sets out to prove this phrase true each time she develops, creates and casts new content and develops new business ventures. MysticArt has had the privilege of working with every major broadcast and cable network including ABC, CBS, NBC, FOX, HBO, USA, MTV, Lifetime, Bravo, CW, and E! Entertainment and seen many shows move on to monumental success.

In addition to her television accomplishments, Katy raised private equity film fund to finance critically acclaimed films such as *Finder's Fee* and *Where the Red Fern Grows*. Katy has a passion for working on projects that promote positive family values and a desire to cherish classic literary achievements through the film medium inspired her to produce time-honored classic *Where the Red Fern Grows*, which stars rock musician Dave Matthews, Kris Kristofferson, Mac Davis and Ned Beatty and was distributed by Walt Disney. The film received several awards, including the Crystal Heart Award at the Heartland Film Festival.

Wallin teamed up with writer/director Jeff Probst and produced critically-acclaimed film *Finder's Fee*, starring iconic actor James Earl Jones, Oscar-nominated actor Robert Forster, Erik Palladino, Matthew Lillard, and Ryan Reynolds.

Wallin and Probst teamed up again to produce coming of age drama "KISS ME" which centers around two teen- age girls who forge a friendship that changes both of their lives forever. "Kiss Me" stars Sarah Bolger, Emily Osment, John Corbett, Jenna Fischer, Rita Wilson, Missi Pyle, and Steven Weber. The film was written by Liz Sarnoff (*Deadwood*, *Lost* and *Alcatraz*) and was directed by Jeff Probst.

Wallin recently reunited with the dream team that produced the mega hit television franchise *Power Rangers* and discovered a stellar cast for brand new Sci-Fi Action-Adventure Series "Tribe of the Wild."

Her superior work in the Motion Picture and Television Industry has been featured on *Entertainment Tonight*, *Access Hollywood*, *Extra*, *MTV*, *Entertainment Weekly*, *People Magazine*, *LA Times*, and the *New York Times*.

Having served as the Vice-President of the Casting Society of America, additionally, Katy is an active member of organizations such as the Independent Feature Project West, the Academy of Television Arts and Sciences, and co-founder of the Women's Image Network; a non-profit organization which offers development money to those who create projects for film and television which depict woman in a positive light.

By challenging herself and her team to attain excellence, Katy has been paramount in influencing the motion picture and television industry and she continues to impact all genres, as it is her function to make television and film worth watching and to do so with a smile.

TELEVISION

MYSTICART PICTURES

TV CREDIT HIGHLIGHTS



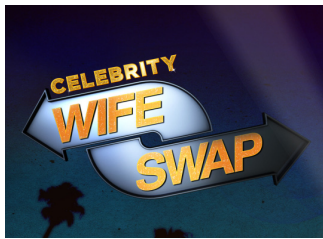
ABC
ENDEMOL USA



LIFETIME
COLLINS AVENUE



HGTV
A. SMITH & CO.



ABC
ZODIAK USA



LIFETIME
FULL PICTURE



NBC
MYSTICART PICTURES



LIFETIME
MYSTICART PICTURES



NBC
MYSTICART PICTURES



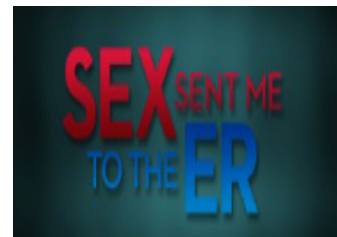
FYI
FULL PICTURE



CBS
FREMANTLE MEDIA



LIFETIME
TWOFOUR



TLC
GRB ENTERTAINMENT

TELEVISION

MYSTICART PICTURES



LIFETIME
WORLD OF WONDER



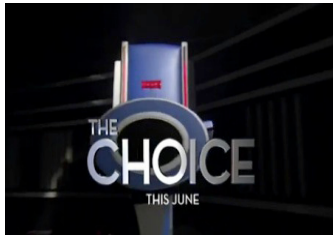
CW
25/7 PRODUCTIONS



AL JAZEERA
JIGSAW PRODUCTIONS



FOX
ENDEMOL USA



FOX
A. SMITH & CO.



LIFETIME
FLY ON THE WALL



ABC
STONE & COMPANY



ABC
ENDEMOL USA



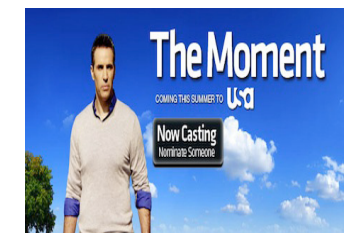
FOX
A. SMITH & CO.



FOX
A. SMITH & CO.



LIFETIME
RDF MEDIA

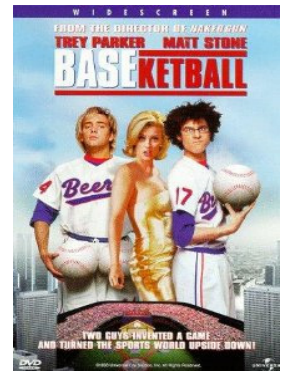
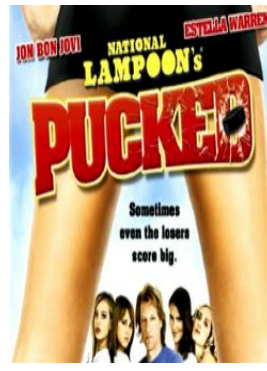
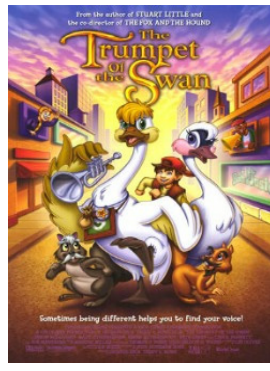
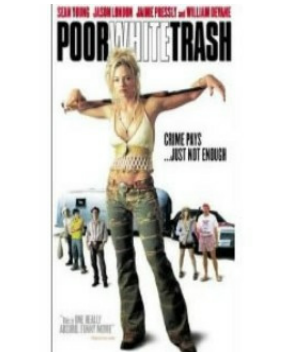
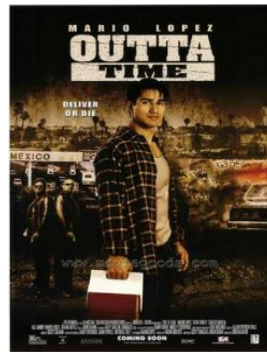
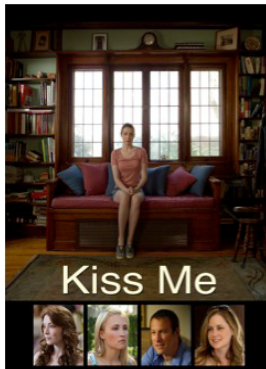


USA
THE COMPANY

FILM

MYSTICART PICTURES

FILM CREDIT HIGHLIGHTS



Represented by Chris Newman | UTA | 310.246.6060

WWW.MYSTICARTPICTURES.COM | 323-536-9999